

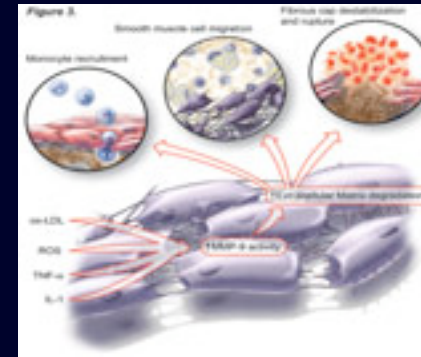
## Targeting the Vulnerable Plaque in the Vulnerable Patient

**Subodh Verma, MD, PhD**

Cardiac Surgeon and Scientist  
 St. Michael's Hospital  
 Canada Research Chair in Atherosclerosis  
 Director Traineeship in Atherosclerosis  
 University of Toronto

## Matrix Metalloproteinases

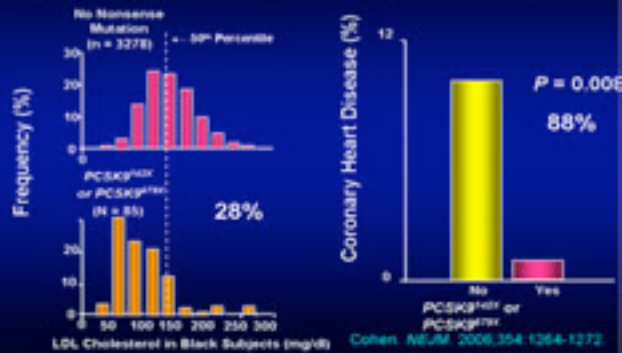
MMP-9: A Key Mediator of Vascular Inflammation



Szmitko PE and Verma S *Circulation* 2003

## The Concept of Lifetime Risk Insight from polymorphism in 3% of black population

LDL Cholesterol and Coronary Heart Disease Among Black Subjects by PCSK9<sup>422X</sup> or PCSK9<sup>679X</sup> Allele



## Canadian Lipid Guidelines 2006



### Risk Categories and Intervention/Target Levels

Risk Level	Treat to:	Treat to:	
		LDL-C	TC/HDL-C Ratio
High	≥ 20%	< 2.0	& < 4.0
Treat if:			
Moderate	10%-19%	≥ 3.5	or ≥ 5.0
Low	< 10%	≥ 5.0	or ≥ 6.0

\*Sufficient to achieve LDL-C ↓ of at least 50%

### ASTEROID: Treatment effect on lipids

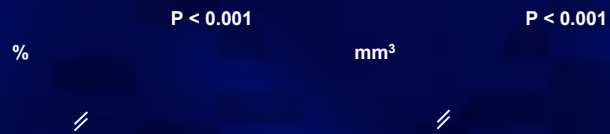
n = 346



\*P < 0.001 vs baseline

Nissen SE et al. JAMA. 2006;295:1556-65.

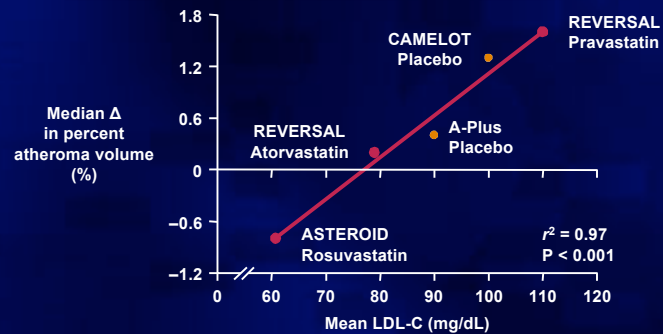
### ASTEROID: Treatment effect on primary efficacy parameters



Nissen SE et al. JAMA. 2006;295:1556-65.

### Relationship between ↓ LDL-C and atheroma burden

Data from recent IVUS trials



Nissen SE et al. JAMA. 2006;295:1556-65.

