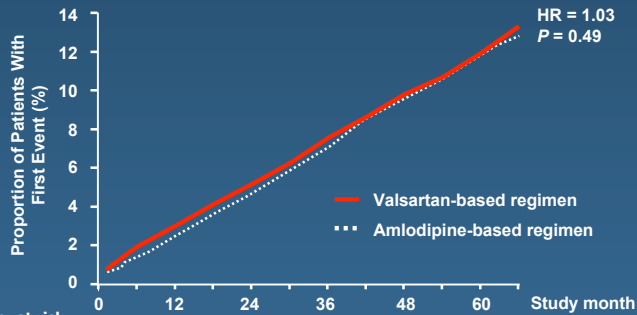


VALUE: Primary Endpoint

Composite of Cardiac Morbidity & Mortality

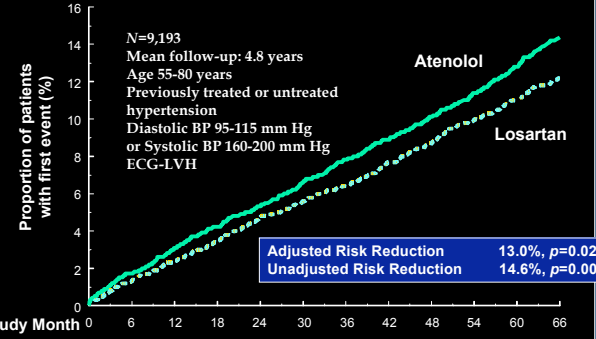


Number at risk	0	12	24	36	48	60
Valsartan	7649	7459	7407	7250	7085	6906
Amlodipine	7596	7469	7424	7267	7117	6955

Julius S, et al. *Lancet* 2004;363(9426):2022-31.

LIFE: Primary Composite Endpoint

Composite of CV death, stroke and MI

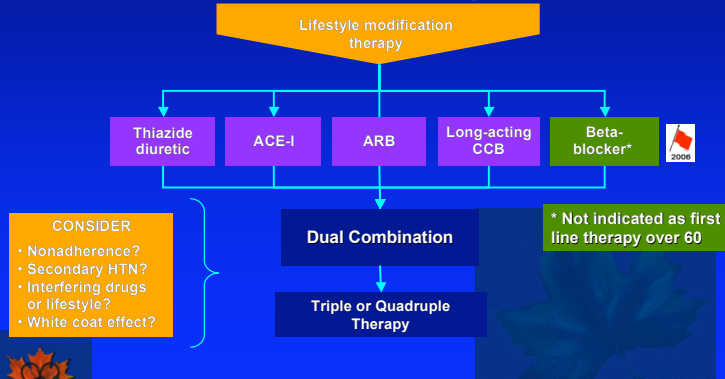


Number at risk	0	6	12	18	24	30	36	42	48	54	60	66
Losartan (n)	4,605	4,524	4,460	4,392	4,312	4,247	4,189	4,112	4,047	3,897	1,889	901
Atenolol (n)	4,588	4,494	4,414	4,349	4,289	4,205	4,135	4,066	3,992	3,821	1,854	876

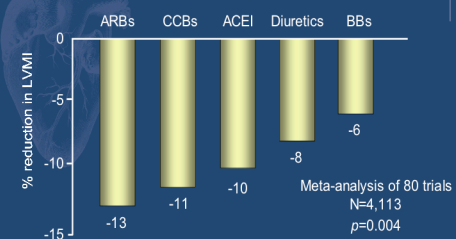
Dahlof B, et al. *Lancet* 2002; 359(9311):995-1003.

V. Summary: Treatment of Systolic-Diastolic Hypertension without Other Compelling Indications

TARGET <140/90 mmHg



Comparison-Left Ventricular Hypertrophy Reduction in LV Mass Index Among Antihypertensive Classes



ARBs reduce LV mass index, thus diminishing the risk of clinical events and end-organ damage.

Klingbeil AJ, et al. *Am J Med* 2003; 115(1):41-6.
Levy D, et al. *N Engl J Med*. 1990; 322:1581-6.